

Kore Global's approach to Impact Measurement and Management (IMM)

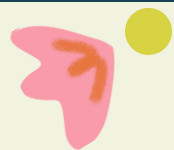
Helping our clients to track, measure, and demonstrate social impact through right-sized and practical IMM systems and rigorous evaluations.



Overview

Kore Global supports clients in designing and implementing IMM systems that are equity-centred, participatory, and built for practical use. We partner with investors, funders, businesses, and implementers to generate actionable insights, support real-time learning, and inform strategies for greater impact. Whether clients need stronger articulation of impact theses and pathways, more robust measurement frameworks and tools, or user-focused evaluations, we deliver tailored, values-aligned solutions that drive reflection, support better decision-making, and deepen impact.

Our core IMM services



IMM frameworks, processes, and tools

We help clients build fit-for-purpose IMM systems that centre gender equality and social inclusion and support real-time decision-making.

- We develop right-sized results frameworks, plans, scorecards and measurement tools that enable accountability and learning, whilst minimising the burden on clients and grantees.
- We utilise and design gender equality and social inclusion metrics, with a particular focus on indicators that capture outcomes and impact.
- We embed adaptive learning into organisational IMM strategy cycles and processes.

Theory-based and developmental evaluations

Our evaluations are values-based, complexity-aware, methodologically rigorous, and tailored to the stage and objectives of each engagement.

- We design and implement portfolio evaluations to help our partners to better understand their contribution to social impact.
- We utilise mixed-methods approaches that apply a range of qualitative, quantitative, and participatory tools.
- We embed deep geographical, sectoral, and contextual awareness and expertise.

Portfolio reviews and benchmarking

We assess and benchmark performance and impact across investments and initiatives to support learning, accountability, and strategic planning.

- We evaluate investment and grant portfolios, as well as related initiatives, such as technical assistance and performance-based financing.
- We apply industry standards and frameworks, such as the 2X Challenge, IRIS+, HIPSO, and WEPs.
- We apply bespoke gender diagnostics and indices to benchmark social performance, enabling meaningful comparison across sectors and geographies, and identify opportunities for greater impact.



Our approach



Power-informed and collaborative: We prioritise ethical, non-extractive, co-creative practices that value diverse forms of knowledge and challenge dominant power dynamics.



Utilisation-focused and reflexive: We focus on generating politically informed and context-specific insights that generate actionable recommendations, ensuring knowledge products are accessible and useful for learning, adaptation, and decision-making.



Intersectional and inclusive: Our approaches, methods, and processes are alert to the effects of intersecting identities and the needs, rights, and perspectives of all partners and stakeholders.



Forward-looking: We embed skill-building to ensure sustainability and strengthen IMM capabilities within organisations and ecosystems.

Let's work together

If you would like to learn more about Kore Global, our values, mission, and work. Please visit koreglobal.org or contact us at contact@koreglobal.org.